

# RAFAELA CARRASCO COMPANY

## “ARIADNA (AL HILO DEL MITO)”

### TECHNICAL RIDER

STAGE	MINIMUM DIMENSIONS	MAXIMUM DIMENSIONS
PROSCENIUM ARCH	12.20 m	12 m
STAGE DEPTH FROM THE HOUSE CURTAIN LINE TO THE LAST USEABLE PIPE	11.50 m	9.50 m
DISTANCE FROM HOUSE TABS TO BACKSTAGE WALL	12.50 m	10.50 m
WIDTH BETWEEN WALLS	22 m	16 m
HEIGHT TO THE GRID	20 m	16 m

### STAGE

- 1 HOUSE CURTAIN (FLY OR TRAVELER)
- BLACK BOX MASKING: 5 BORDERS, 5 LEGS AND BLACK BACK DROP.
- 1 COUNTERWEIGHT (OR MOTORIZED) FLY-BAR TO HANG COMPANY SET APPROX 200KG.
- 7 ELECTRIC FLY-BARS ON STAGE. (1 FLIES DURING THE SHOW)
- 1 HOUSE ELECTRIC FLY-BAR OR BRIDGE OR LATERAL HOUSE POSITIONS.
- 2 QUICK CHANGE DRESSING ROOMS (1 USR AND 1 USL) EACH WITH A MIRROR, A TABLE, A CLOTHES HANGER AND A LIGHT.
- 2 COSTUME HANGING RAILS

**FLAMENCO SOUND FLOOR, NON SLIP MATT BLACK**, or if there isn't one, a 18mm. plywood floor must be layed and fixed over the danceable stage area. This floor has to be painted matt black the day before the company arrives. This floor has to be painted matt black the day before the company arrives.

**N.B. THE FLAMENCO SOUND FLOOR MUST BE INSTALLED AND THE MICROPHONES TESTED BEFORE THE COMPANY ARRIVES.**

**VERY IMPORTANT: THE STAGE FLOOR MUST BE FLAT, CLEAN, SMOOTH AND GENERALLY IN GOOD CONDITION. IF THIS NOT THE CASE PLEASE CONTACT THE COMPANY.**

### THE COMPANY SET AND PROPS

- 5 FABRIC COVERED SQUARE TUBE ALUMINIUM FRAMES (2.50m wide x 3.75m high. Total weight approx 200Kg. THE COMPANY TRAVELS WITH IT'S OWN HANGING SYSTEM.
- 21 PLASTIC SUNFLOWERS
- 14 WHITE CHAIRS <https://www.ikea.com/gb/en/p/ivar-chair-pine-90263902/>



Photo scenery

## LIGHTING

17	2 Kw PLAN CONVEX ( WITH BARN-DOORS )
18	1 Kw PLAN CONVEX ( WITH BARN-DOORS )
10	PROFILES 2 KW 11/22
22	PROFILES 1KW 22/40, 13/42 o ETC 750w 25/50
7	PROFILES 1KW 15/38 o 15/30 o ETC 750w 15/30 (7 WITH DROP IN IRIS)
24	PAR 64 220V CP62
16	PAR 64 220V CP61
16	PAR 64 220V CP60
10	1 Kw ASSYMETRICAL CYC LIGHTS (HANGABLE)
10	SVOBODAS (IF THESE ARE NOT AVAILABLE THEY CAN BE SUBSTITUTED BY 10 PAR 64 CP60 )
9	CAMEO PIX BAR 600 160W (12 LED)
8	SIDE BOOMS 4m. HIGH WITH 4 ADJUSTABLE INTERMEDIATE HEIGHTS
1	4m. BLACK PIPE WITH BASE PLATE
1	HAZER MDG ATMOSPHERE, ROBE , ANTARI
126	2.5KW DIMMER
6	5KW DIMMER
1	PROGRAMMABLE DESK WITH SOFT PATCH AND A MANUAL CROSSFADE ( <b>VERY IMPORTANT</b> ). ETC PREFERRED. THE DESK MUST HAVE ADEQUATE WORK LIGHT.
	THERE MUST BE BLUE RUNNING LIGHTS IN THE WINGS AND CROSSOVER DURING THE SHOW

**ALL LANTERNS MUST BE EQUIPED WITH GEL FRAMES, BARN DOORS, CABLES AND ALL OTHER NECESSARY ACCESSORIES FOR THE CORRECT FITTING UP AND RUNNING OF THE EQUIPMENT**

**IMPORTANT:** The electric flybars must be empty on the company's arrival if there is no pre-hang.

**The light plot is at the end of this technical rider**

## SOUND

### FOH CONTROL

- Mixer Yamaha CL5.
- 1 Reverb TC M 3000.
- 1 professional double CD player with autocue function.
- Intercom. Power stabilizer and lights for the mixer and the racks.
- THE F.O.H. Control must be in the stalls, centred with the stage, at audience height and never under a balcony.

### SPEAKERS

- The sound system must be adequate to the auditorium capacity, giving 110 db and with an uniform frequency response of 20 to 20,000 Hz. in all of the audience seating area.
- All additional speaker systems must have their own graphic EQ, delay and must run through the console by a Matrix.
- Acceptable sounds systems ; Meyer, L-acoustic, D&B, Nexo.

### MONITORS

- 2 IEM Systems with quality ear pieces.
- 8 sidefills Meyer UPA, Nexo PS 15 mounted on black tripods in at least 6 independant sends.

### MICROPHONES

Nº	INSTRUMENT	MIC	NOTES	STAND
1	Claps	DPA 4061	WIRELESS. SKINCOLOURED	
2	Claps	DPA 4061	WIRELESS. SKINCOLOURED	
3	Guitar 1	DPA 4099G	WIRELESS. GUITAR ADAPTER	
4	Guitar 2	DPA 4099G	WIRELESS. GUITAR ADAPTER	
5	Vocal 1	DPA 4066	WIRELESS. HEADSET	
6	Vocal 2	DPA 4066	WIRELESS. HEADSET	
7	Feet	DPA 4061	WIRELESS. SKINCOLOURED	

8	Feet Spare	DPA 4061	WIRELESS. SKINCOLOURED	
9	Claps/Guitar Spare	DPA 4061	WIRELESS. SKINCOLOURED	
10	Vocal Spare	DPA 4066	WIRELESS. HEADSET	
11	Ambient 1	AKG 416		TABLE STAND
12	Ambient 2	AKG 416		TABLE STAND
13	Floor	Crown PCC 160	UNDER THE FLOOR	
14	Floor	Crown PCC 160	UNDER THE FLOOR	
15	Floor	Crown PCC 160	UNDER THE FLOOR	
16	Floor	Crown PCC 160	UNDER THE FLOOR	
17	Floor	Crown PCC 160	UNDER THE FLOOR	
18	Floor	Crown PCC 160	UNDER THE FLOOR	
19	Floor	Crown PCC 160	UNDER THE FLOOR	
20	Floor	Crown PCC 160	UNDER THE FLOOR	
21	Floor	Crown PCC 160	UNDER THE FLOOR	
22	Floor	Crown PCC 160	UNDER THE FLOOR	
23	Floor	Crown PCC 160	UNDER THE FLOOR	
24	Floor	Crown PCC 160	UNDER THE FLOOR	
25	Floor	Crown PCC 160	UNDER THE FLOOR	
26	Floor	Crown PCC 160	UNDER THE FLOOR	
27	Floor	Crown PCC 160	UNDER THE FLOOR	
28	Talkback	SM 58	On/off switch AT LIGHTING DESK	

**N.B:** All the wireless systems must be Shure UR series or Sennheiser 2000, 5000, the mic for the feet must be a UR1M (small bodypack)

#### INTERCOM:

We require 4 intercom points: 1 at the lighting desk, 1 at the sound desk, 1 at the house tabs and 1 wireless on stage. If the sound and light desks are at the same position then only 3 points would be acceptable.

**Both the sound power source and the ground must be independant and not shared with the lighting source.**

**Any change to the described material must be approved by ANGEL OLALLA**

### **TECHNICAL CREW FOR THE LOAD IN AND SET-UP**

LOADING CREW	2 PERSONS
STAGE	1 FLYPERSON, 1 CARPENTER + 2 STAGE HANDS
LIGHTING	3 ELECTRICIANS (1 must focus)
SOUND	1 SOUND TECHNICIAN
WARDROBE	1 COSTUMIER/ IRONER

IF THE SOUND EQUIPMENT AND/OR THE FLAMENCO SOUND FLOOR IS EXTERNAL TO THE THEATRE A SOUND TECHNICIAN FROM THE HIRE COMPANY WILL BE REQUIRED AS WELL AS LOADING HANDS.

### **TECHNICAL CREW FOR THE BREAK DOWN AND LOAD OUT**

LOADING CREW	2 PERSONS
STAGE	1 FLYPERSON, 1 CARPENTER + 2 STAGE HANDS
LIGHTING	2 ELECTRICIANS
SOUND	1 SOUND TECHNICIANS
WARDROBE	1 COSTUMIER/ IRONER

### **TECHNICAL CREW DURING THE REHERSAL AND SHOW**

STAGE	2 FLYPERSONS
LIGHTING	1 ELECTRICIAN
SOUND	1 SOUND TECHNICIAN
WARDROBE	1 COSTUMIER/ IRONER
CLEANER	THEATRE PERSONNEL

## SCHEDULE

ESTIMATED LOAD IN TIME	20 MINUTES, DEPENDING ON THE ACCESS
ESTIMATED FIT UP AND REHERSAL TIME	15 HOURS, WITHOUT A LIGHTING PRE-HANG. NOT INCLUDING LUNCH AND/OR DINNER BREAKS. 10 HOURS, WITH A LIGHTING PRE-HANG. NOT INCLUDING LUNCH AND/OR DINNER BREAKS. <b>N.B. THE FLAMENCO SOUND FLOOR MUST BE INSTALLED AND THE MICROPHONES TESTED BEFORE THE COMPANY ARRIVES. IF THIS IS NOT POSSIBLE PLEASE CONTACT THE COMPANIES TECHNICAL CO-ORDINATOR.</b>
ESTIMATED BREAK DOWN TIME	75 MINUTES
ESTIMATED LOAD OUT TIME	20 MINUTES, DEPENDING ON THE ACCESS
SHOW TIME	65 MINUTES

## DRESSING ROOMS

1	RAFAELA CARRASCO
2	4 DANCERS
3	6 MUSICIANS
4	WARDROBE
5	PRODUCTION
6	3 TECHNICIANS

**ALL DRESSING ROOMS MUST BE EQUIPPED WITH MIRRORS, TOWELS AND SHOWERS WITH WARM WATER. IN WINTER THEY MUST BE WARM BEFORE THE COMPANY ARRIVES.**

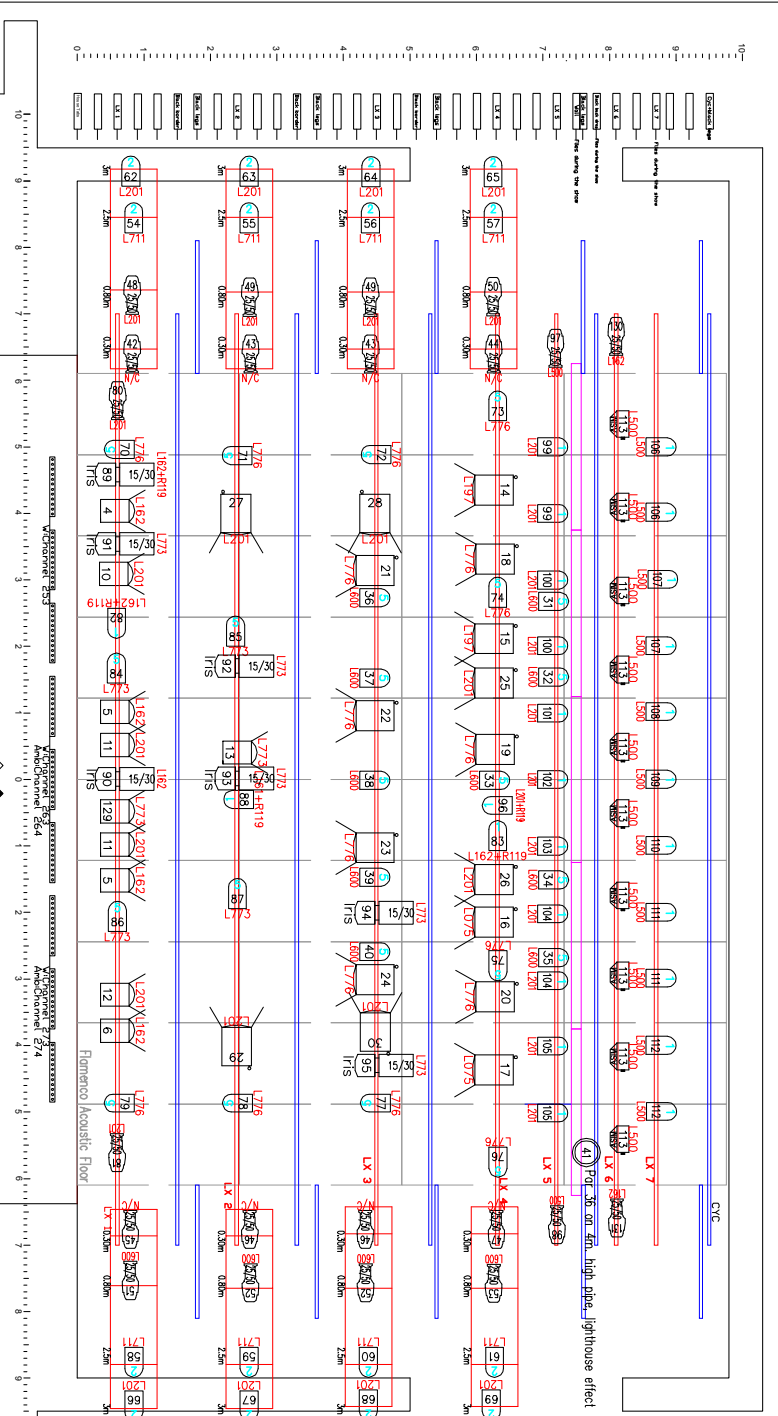
## OTHER NEEDS

- IN WINTER THE STAGE AREA MUST BE HEATED DURING THE FIT-UP, DANCERS WARM UP, REHERSALS AND SHOW.
- WHEN THERE ARE 2 OR MORE PERFORMANCES: WASHING AND DRYING MACHINE
- ENOUGH DRINKING WATER FOR FIT UP, SHOW AND GET OUT.

## CONTACTS

**IF YOU HAVE A PROBLEM IN PROVIDING ALL OR PART OF THIS TECHNICAL RIDER OR WANT TO CHANGE ANY OF THE REQUIRED EQUIPMENT IT **IS ESSENTIAL** THAT YOU CONTACT THE RELEVANT PERSON:**

Alejandro Salade	Production	+34647964353	<a href="mailto:director@fundaciónmiguelde Molina.org">director@fundaciónmiguelde Molina.org</a>
Gloria Montesinos	Technical coordination and Lighting	+34639863941	<a href="mailto:montesinosgloria@gmail.com">montesinosgloria@gmail.com</a>
Angel Olalla	Sound	+34646492110	<a href="mailto:angelolallasonido@gmail.com">angelolallasonido@gmail.com</a>
Oscar Alonso	Stage	+34654847704	<a href="mailto:rusti77@gmail.com">rusti77@gmail.com</a>



Channel House lights: 200  
Channel Hazer: 280

Approx fly-bar trim LX17.75m  
Approx fly-bar trim LX2.1X3.5m  
Approx fly-bar trim LX6.850m  
Approx fly-bar trim LX7.8m

LEGEND	
	P.C. 2kW with barn doors 17
	P.C. 12kW with barn doors 18
	Profile 2kW 11/22 10
	Profile ETC S4 750w 25/50 7
	Profile ETC S4 750w 25/50 22
	Par 64 CP60 26
	Par 64 CP61 16
	Par 64 CP62 24
	Asymetric cyc light 1kW 10
	Cameo Pix Bar 600 160w 9
	Company Par 36 1
	Hazer 1

"ARIADNA/AL HILO DEL MITO"  
2020 TOUR  
RAFAELA CARRASCO COMPANY  
Light plot  
LIGHTING DESIGNER : GABRIELA MONTESINSGAAL